



CILA 2S-MPP

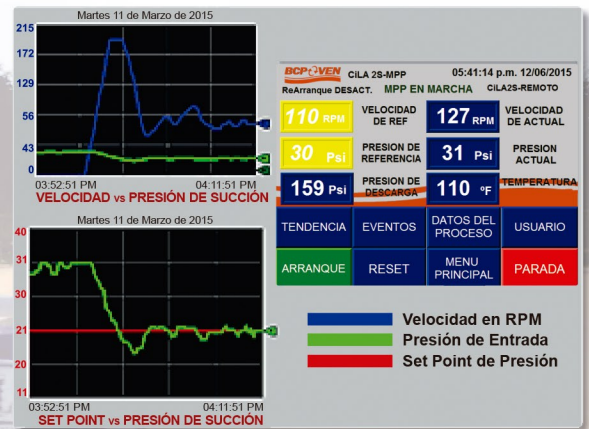
Multiphase surface pumping system.

Versatile system that integrated technology pumping surface monitoring and control systems developed through the CILA2S, for handling pressures and / or transfer of multiphase flows by flow lines.

CILA 2S Multiphase surface pumping system features

Decreases pressure in the manifold, generating a controlled pressure at the wellhead.

Capable of working efficiently with high and low fluid viscosity besides abrasive and corrosive solids.



Behavior of the manifold pressure Stabilized Production by PID

Operates with differential pressure up to 1000 psi (69 bar) with high efficiency.

Flow up to 50,000 BPD with low energy consumption.

Operates with multiphase fluids (water, oil and gas).

Availability gasket seal and mechanical seal.



SKID CILA 2S MPP



Multiphase surface pumping system

BCP-GROUP

800 Town & Country Blvd
 City Center ONE - Level 3
 Houston, TX 77024
www.bcpgrp.com



CILA 2S-MPP

Midstream
Multiphase surface
pumping system

In the CILA 2S MPP the multiphase pump are controlled according to the production manifold pressure (MP). The system pressure remained stable MP to the line, even when the flow rate varies, the RGP, the % BSW and temperature.

Solution dedicated to Oil Production Systems that allows control and monitoring of all equipments and instruments related to the well and surface pumps necessary to make a real optimization of the artificial lifting or surface pumping system.



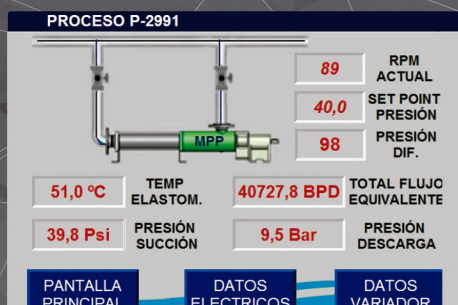
General process data

APPLICATIONS

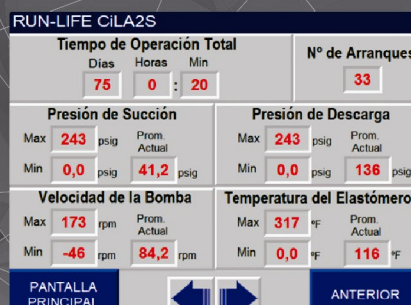
- Run life of the pump operation.
- Alarms and protections for pressure suction and discharge pressure, temperature and engine torque elastomer.
- Intelligent torque control.
- Power quality measurement (including harmonic spectrum).
- Ramp speed limit pump.
- Safe boot and stepped.
- Speed control the pump temperature.
- Data logging variables local operational.
- Sequencer events and alarms.
- Trends operating variables.
- Suction from tank with level control.



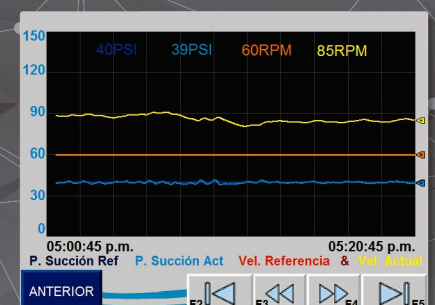
Multiphase surface pumping system



Process conditions of the pump MPP



Run life of multiphase system



Viewing trends, of different process variables.